
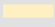






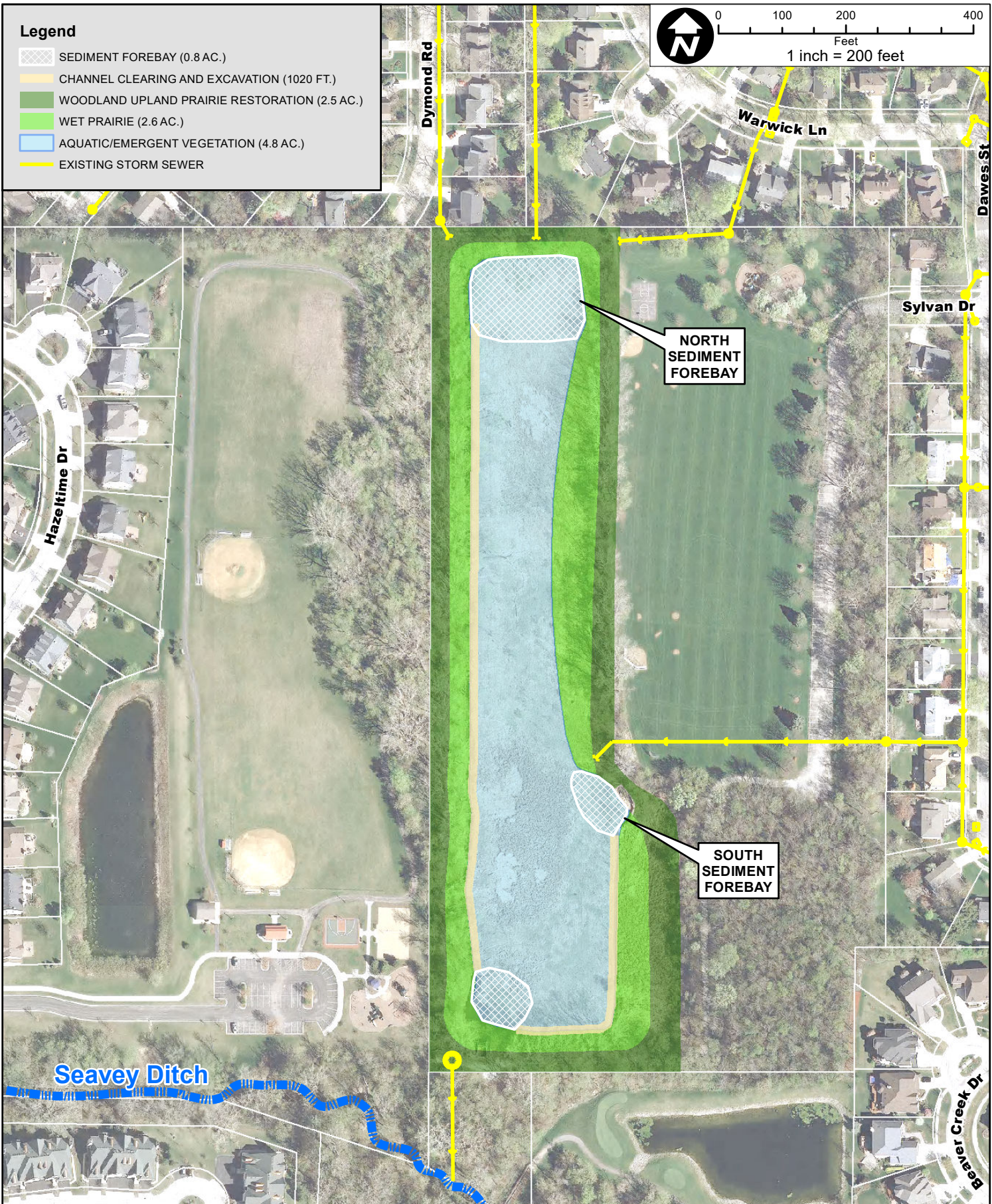
**Legend**

-  SEDIMENT FOREBAY (0.8 AC.)
-  CHANNEL CLEARING AND EXCAVATION (1020 FT.)
-  WOODLAND UPLAND PRAIRIE RESTORATION (2.5 AC.)
-  WET PRAIRIE (2.6 AC.)
-  AQUATIC/EMERGENT VEGETATION (4.8 AC.)
-  EXISTING STORM SEWER



0 100 200 400  
Feet

1 inch = 200 feet



CLIENT:

**VILLAGE OF LIBERTYVILLE**

TITLE:

**CHARLES BROWN PARK  
DETENTION BASIN RESTORATION**

PROJ. NO. 180265

DATE: 7/13/2018

SHEET 1 OF 1

DRAWING NO.



**CHRISTOPHER B. BURKE ENGINEERING, LTD.**  
9575 W. Higgins Road, Suite 600 • Rosemont, Illinois 60018 • (847) 823-0500

DSGN.		SCALE:	1:0
DWN.		AUTHOR:	MHAYES
CHKD.		PLOT DATE:	7/13/2018
FILE:	LOCATION MAP		

**EXH**